

Body Paragraph #2 Guidelines

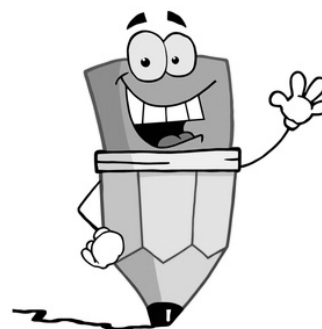
Word Count: 300-350 words

Deadline: Tuesday, November 12 before 12noon

email to ntakeda.aogaku@yahoo.com

You will have to include the following parts body paragraph #1 of your research paper.

1. a topic sentence
2. two supporting ideas
3. 2-3 details for each supporting idea
4. a concluding sentence



- ★ You need to include at least **two in-text citations** (one paraphrase and one quote) in body paragraph #2.
- ★ Remember to use ***funnel organization*** to organize your supporting ideas and details.

You will need to use this typing format for your body paragraph:

- Times New Roman or Arial font / font size 12
- double-spacing (2行)
- include your name, course and date at the top of the page
- include a running head with your family name and page number
- ★ You must submit your first draft of your body paragraph #2 by the deadline! Drafts submitted late will NOT receive editing/revising comments.

